

Thank you

FOR YOUR
INTEREST IN
CORWIN

Please enjoy this complimentary excerpt from Just Teaching.

[LEARN MORE](#) about this title!

Just Teaching Tool #1

Four Lenses

This first tool is designed to help you look at each student so you can create a forest that grows each student into a thriving giant. Feel free to do this with others, especially if you are in upper grades and share students.

- 1) Think of the student you are struggling to connect with the most. Write their name in the center box.
- 2) Look at the student through the four lenses to identify assets that could help your community (your forest) support and feed growth.
- 3) After including as many assets as possible, identify a next step for each of the four lenses that will allow the student to thrive and take action. What could you do to connect friends, your academic content, their own character development, or their home to your work together?
- 4) Repeat for as many students as you need to see better. This can be the focus of your 2x10.

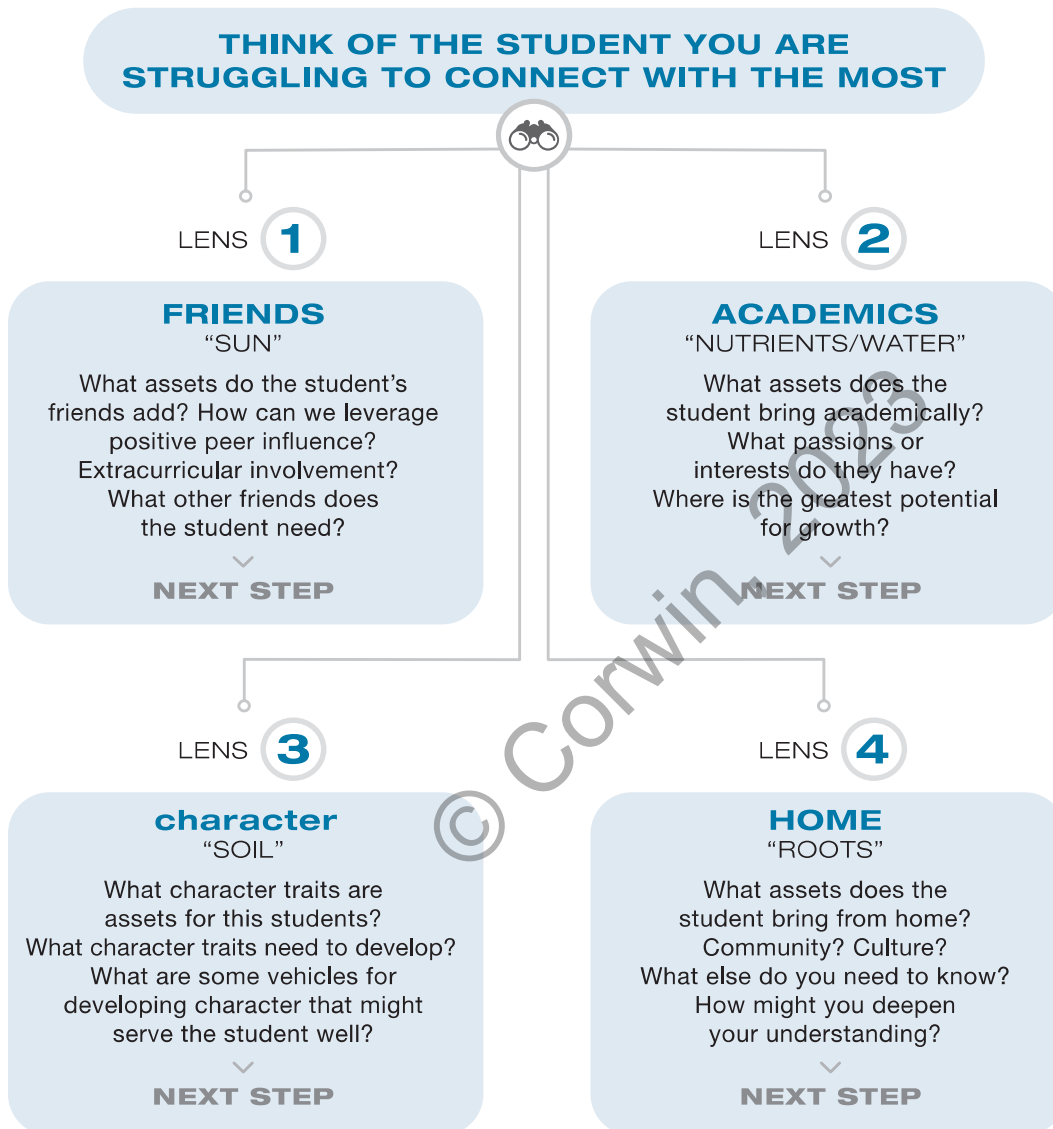
Extend yourself grace. You will not get this right the first time. As the experts in improvement science write, “Our work is possibly wrong and definitely incomplete” (Bryk et al., 2015, p. 79). Don’t let perfection be the enemy of improvement.

(Continued)

(Continued)

TOOL #1 | FOUR LENSES

THE FOREST CAN HELP US SEE EACH TREE, SO WE CAN GROW GIANTS



“ REMEMBER OUR WORK IS POSSIBLY WRONG AND DEFINITELY INCOMPLETE. ”

BRYK ET AL., 2015, P.79

SCAN THE QR CODE
FOR A FILLABLE PDF

